

# B72G - EXCELON® Modular System

## General purpose filter regulator

- Port size: 1/4" or 3/8" (ISO G/PTF)
- Excelon design allows in-line installation or modular installation with other Excelon products
- High efficiency water and particle removal
- Quick release bayonet bowl
- Push to lock adjusting knob with tamper resistant accessory
- Metal bowl with prismatic liquid level indicator lens



### Technical features

**Medium:**  
Compressed air only

**Maximum operating pressure:**  
10 bar (145 psi)

**Pressure range:**  
0,3 ...10 bar (4 ... 145 psi)  
0,3 ... 4 bar (4 ... 58 psi) optional,  
0,3 ... 2 bar (4 ... 29 psi) optional

**Filter element:**  
40 µm and 5 µm

**Port size:**  
G1/4, G3/8, 1/4 or 3/8 NPT

**Gauge port:**  
Rc 1/8 with ISO G main ports  
1/8 PTF with PTF main ports

**Flow:**  
38 dm<sup>3</sup>/s maximum  
At port size: 1/4"  
Inlet pressure 10 bar (145 psi);  
6,3 bar (91 psi) set pressure and a  
p: 1 bar (14,5 psi) droop from set.

**Relieving:**  
Standard

**Drain:**  
Manual, automatic or semi-automatic

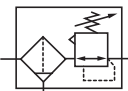
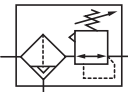
**Automatic drain operating conditions (float operated):**  
Bowl pressure required to close drain: > 0,35 bar (5 psi)  
Bowl pressure required to open drain: ≤ 0,2 bar (2.9 psi)  
Minimum air flow required to close drain: 0,1 m<sup>3</sup>/s (0.2 scfm)  
Manual operation: depress pin inside drain outlet to drain bowl

**Semi automatic drain operating conditions (pressure operated):**  
Bowl pressure required to close drain: Greater than 0,1 bar (1.5 psig)  
Bowl pressure required to open drain: Less than 0,1 bar (1.5 psig)  
Minimum air flow required to close drain: 0,5 dm<sup>3</sup>/s (1 scfm)

**Ambient/Media temperature:**  
Tranparent bowl:  
-34 ... +50°C (-29 ... +122°F)  
Metal bowl:  
-34 ... +65°C (-29 ... +149°F)  
Air supply must be dry enough to avoid ice formation at temperatures below +2°C (+35°F).

**Materials:**  
Body: Zinc  
Bonnet: Acetal  
Valve: PP and TPV  
Transparent bowl: PC  
Metal bowl: Zinc  
Liquid level indicator lens (metal bowl): transparent PA  
Filter element: sintered PP  
Elastomers: CR & NBR

### Technical data B72G - standard models

Symbol	Port size	Size	Drain	Pressure range (bar) (psi)	Filter element (µm)	Adjustment	Bowl	Weight (kg)	Model
	G1/4	Basic	Manual	0,3 ... 10 4 ... 145	40	Knob	PC (transparent)	0,52	B72G-2GK-QT3-RMN
	G3/8	—	Manual	0,3 ... 10 4 ... 145	40	Knob	PC (transparent)	0,52	B72G-3GK-QT3-RMN
	G1/4	Basic	Manual	0,3 ... 10 4 ... 145	5	Knob	PC (transparent)	0,52	B72G-2GK-QT1-RMN
	G3/8	—	Manual	0,3 ... 10 4 ... 145	5	Knob	PC (transparent)	0,52	B72G-3GK-QT1-RMN
	G1/4	Basic	Automatic	0,3 ... 10 4 ... 145	40	Knob	PC (transparent)	0,52	B72G-2GK-AL3-RMN
	G3/8	—	Automatic	0,3 ... 10 4 ... 145	40	Knob	PC (transparent)	0,52	B72G-3GK-AL3-RMN
	G1/4	Basic	Automatic	0,3 ... 10 4 ... 145	5	Knob	PC (transparent)	0,52	B72G-2GK-AL1-RMN
	G3/8	—	Automatic	0,3 ... 10 4 ... 145	5	Knob	PC (transparent)	0,52	B72G-3GK-AL1-RMN

### Option selector

**B72G-★K-★-★-★-★**

Port size	Substitute
1/4"	2
3/8"	3
Thread form	Substitute
PTF	A
ISO G parallel (standard)	G
Drain	Substitute
Manual (standard)	Q
Semi automatic	S
Auto drain (standard) *1)	A
Bowl	Substitute
Transparent without guard (Standard)	T
Metal with liquid indicator	D
Long metal with liquid indicator (automatic drain)	E
Long transparent (automatic drain)	L
Long transparent with guard	W

Gauge	Substitute
Without (standard)	N
With	G
Pressure range *2)	Substitute
0,3 ... 10 bar (standard)	M
0,3 ... 4 bar	F
0,3 ... 2 bar	C
Diaphragm	Substitute
Relieving (standard)	R
Non relieving	N
Element	Substitute
40 µm ( standard)	3
5 µm ( standard)	1

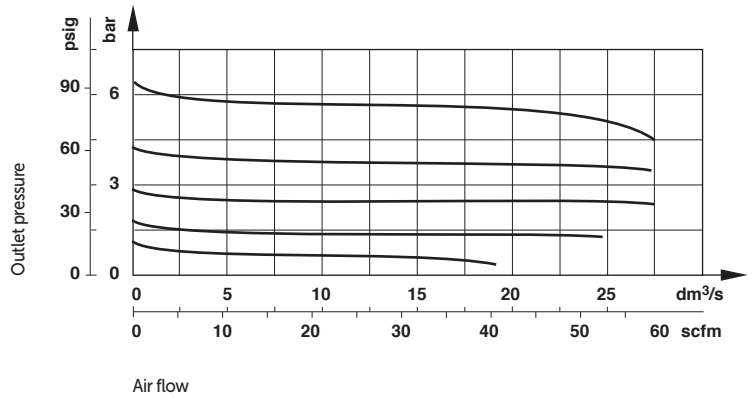
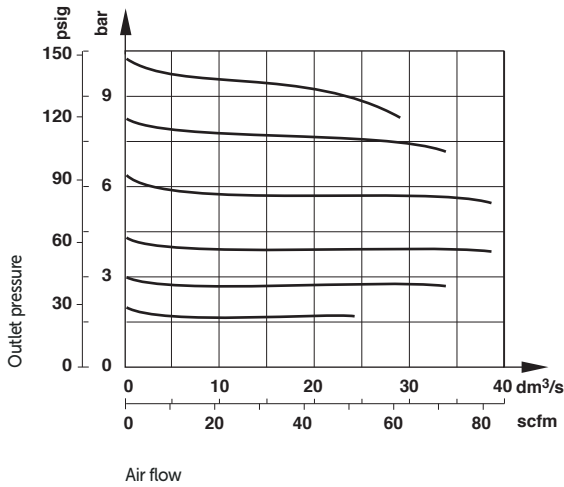
\*2) Outlet pressure can be adjusted to pressures in excess of, and less than, those specified. Do not use these units to control pressures outside of the specified ranges.

\*1) Supplied in long bowl options only.

### Flow characteristics

Inlet pressure: 10 bar (145 psi)  
Port size: 1/4", 40 µm element

Inlet pressure: 7 bar (101 psi)  
Port size: 1/4", 40 µm element





## Accessories


<p>Universal mounting bracket</p>  <p>Page 4</p> <p>4224-50</p>	<p>Quikclamp®</p>  <p>Page 3</p> <p>4214-51</p>	<p>Quikclamp® with wall bracket</p>  <p>Page 3</p> <p>4214-52</p>	<p>Neck mounting bracket</p>  <p>Page 4</p> <p>74316-50</p>	<p>Panel nut</p>  <p>4248-89</p>
<p>Tamper resistant kit</p>  <p>4255-51</p>	<p>Quikmount pipe adaptor *1)</p>  <p>Page 3</p> <p>G1/4: 4215-08 G3/8: 4215-09 1/4 PTF: 4215-02 3/8 PTF: 4215-03</p>	<p>Porting block with three alternative 1/4" ports</p>  <p>Page 3</p> <p>G1/4: 4216-52 1/4 PTF: 4216-50</p>	<p>2/2 Shut-off valves (for full technical specification see datasheet 8.160.600)</p>  <p>Page 4</p> <p>G1/4: T72B-2GA-P1N G3/8: T72B-3GA-P1N 1/4 PTF: T72B-2AA-P1N 3/8 PTF: T72B-3AA-P1N</p>	<p>3/2 Shut-off valves (for full technical specification see datasheet 8.160.600)</p>  <p>Page 4</p> <p>G1/4: T72T-2GA-P1N G3/8: T72T-3GA-P1N 1/4 PTF: T72T-2AA-P1N 3/8 PTF: T72T-3AA-P1N</p>

\*1) Please use a Quikmount pipe adaptor if the Quikclamp® be mounted at inlet or outlet side.

## Pressure switch



<p>Porting block for pressure switch</p>  <p>0523109000000000</p>	<p>Pressure switch (0,5 ... 8 bar)</p>  <p>0881300000000000</p>
--	--

## Padlock


<p>Padlock (brass) with two keys *1)</p>  <p>0613633000000000</p>
--

\*1) For shut-off valves and tamper resistant kit.


## Service kit

	<p>Service kit for auto drain</p> 	<p>Service kit for manual drain</p> 
Element		
40 µm	B72G-KITA40R	B72G-KITM40R
5 µm	B72G-KITA05R	B72G-KITM05R

## Gauge

<p>Center back connection, white face (for full technical specification see datasheet 8.900.900)</p> 				
Pressure range		Thread size		Model
bar *1	Mpa	psi	ø	
0 ... 2,5	—	0 ... 36	40 mm	R1/8 18-015-886
0 ... 4	0 ... 0,4	0 ... 58	40 mm	R1/8 18-015-990
0 ... 10	0 ... 1	0 ... 145	40 mm	R1/8 18-015-989

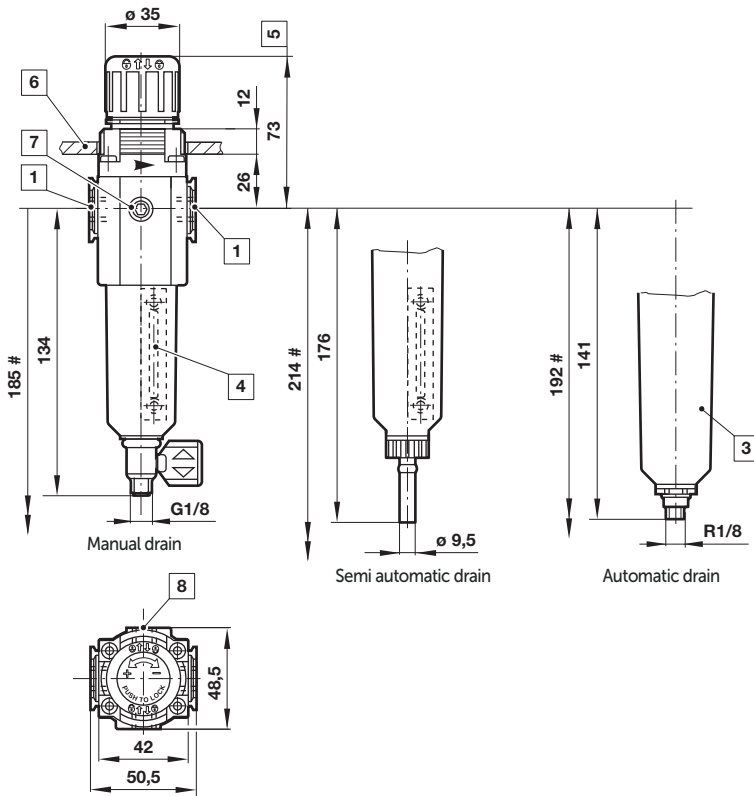
\*1) primary scale

<p>Center back connection, black face for North America (for full technical specification see datasheet 8.900.900)</p> 				
Pressure range		Thread size		Model
psig *1	bar	Mpa	ø	
0 ... 30	0 ... 2	0 ... 0,2	1.5" (40 mm)	1/8 NPT 18-015-214
0 ... 60	0 ... 4	0 ... 0,4	1.5" (40 mm)	1/8 NPT 18-015-211
0 ... 160	0 ... 11	0 ... 1,1	1.5" (40 mm)	1/8 NPT 18-015-212

\*1) primary scale

## Dimensions

Dimensions in mm  
Projection/First angle

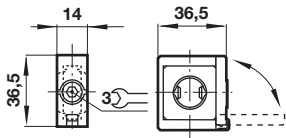


# Minimum clearance required to remove bowl

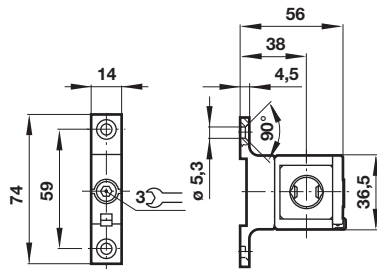
- 1 Main ports 1/4" or 3/8"
- 3 Transparent bowl
- 4 Metal bowl with liquid indicator
- 5 Reduces by 4 mm with knob in locked position
- 6 Panel hole  $\phi 40$  mm, Panel thickness 4 max.
- 7 Gauge port 1/8"
- 8 Alternative gauge port 1/8" plugged

## Accessories

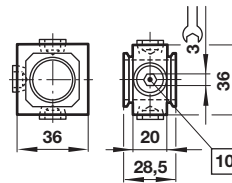
### Quikclamp®



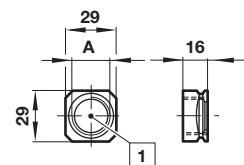
### Quikclamp® with wall bracket



### Porting block



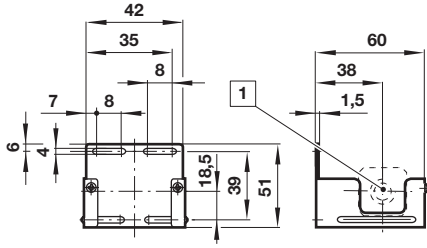
### Pipe adapter



10 Ports 1/4 (ISO G/NPT) plugged

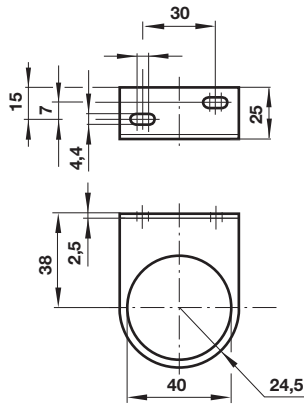
1 Main ports 1/4" or 3/8" (ISO G/PTF)

### Wall mounting bracket

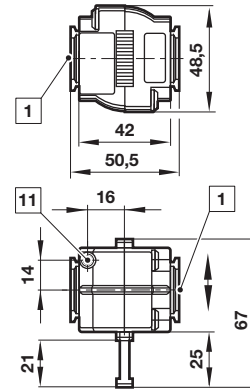


1 Main ports

### Neck mounting bracket



### Shut-off valves

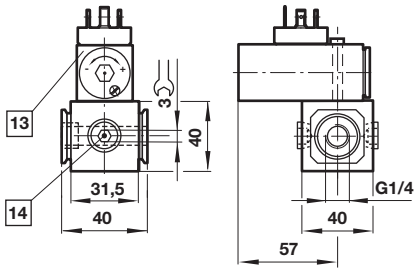


1 Main ports 1/4" or 3/8" (ISO G/PTF)  
 11 Exhaust port M5 at 3/2 valve only

Dimensions in mm  
 Projection/First angle



### Porting block for pressure switch



13 Pressure switch is not in scope of delivery  
 14 Alternative G1/4 ports plugged

### Warning

These products are intended for use in industrial compressed air systems only. Do not use these products where pressures and temperatures can exceed those listed under »Technical features/data«.

Before using these products with fluids other than those specified, for non-industrial applications, life-support systems or other applications not within published specifications, consult IMI Precision Engineering. Through misuse, age, or malfunction, components used in fluid power systems can fail in various modes.

The system designer is warned to consider the failure modes of all component parts used in fluid power systems and to provide adequate safeguards to prevent personal injury or damage to equipment in the event of such failure.

System designers must provide a warning to end users in the system instructional manual if protection against a failure mode cannot be adequately provided.

System designers and end users are cautioned to review specific warnings found in instruction sheets packed and shipped with these products.